

## PRO III™ IRGL/ISBL

### Inset Stop Bar and Runway Guard Lights

Compliances:  
FAA AC 150/5345-46: L-852 G and S



### Applications

The IRGL and ISBL fixtures are used for runway incursion protection and traffic control on taxiways just before active runways. This fixture is suitable for use with Runway Status Light Program (RWSL). They are required for SMGCS operations during low visibility conditions as defined in FAA AC 150/5340-30 and AC 120-57A. These unidirectional lights are designed for use in all weather conditions with any kind of control system including the Digitrac® Control and Monitoring System.

### Features



- ETL Certified
- Low profile, < .25" (6 mm) – FAA Style 3
- Unique combination of high-strength aluminum optical assembly and ductile iron outer ring for snow plow protection
- Low power consumption
- Few parts to stock
- Easy to maintain – no sealant required for prism or feed-through assembly replacement
- Pressure test plug for seal integrity verification
- Long lamp life – Quartz Halogen, 105 W
- Control and Monitoring – Fixture can be supplied with a Crouse-Hinds Logitrac for individual lamp control and monitoring as required for flashing guard light operation or stop bar control. Contact Crouse-Hinds for more info

### Ordering Information



**Fixture Type:**  
G = L-852G, Runway guard light  
S = L-852S, Stop bar light

**Color Filters:**  
Y = Yellow (L-852G only)  
R = Red (L-852S only)  
YX = Yellow/Blank\*  
RX = Red/Blank\*

**Fixture Diameter:**  
12F = Optical assembly with 12" FAA support ring  
NSR = Optical assembly without support ring

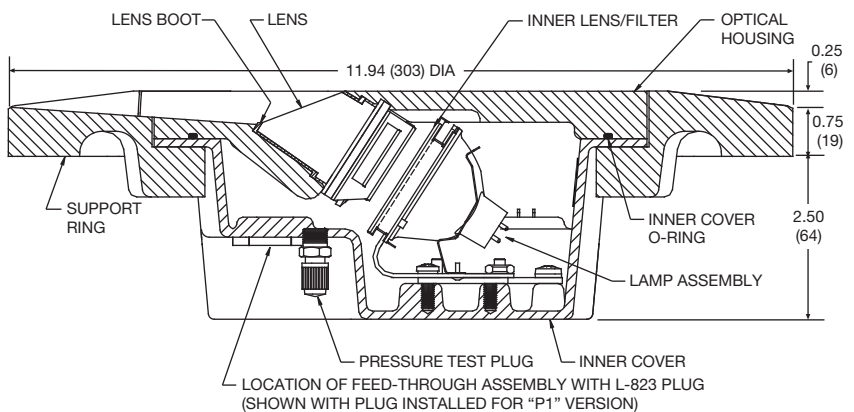
**Option:**  
G = External gasket between optical assembly and support ring  
(Note: Optical assemblies with external gasket will only fit support rings marked "G" on top surface.)

\* Blank color units will have a threaded plug installed (blank is not considered a color).

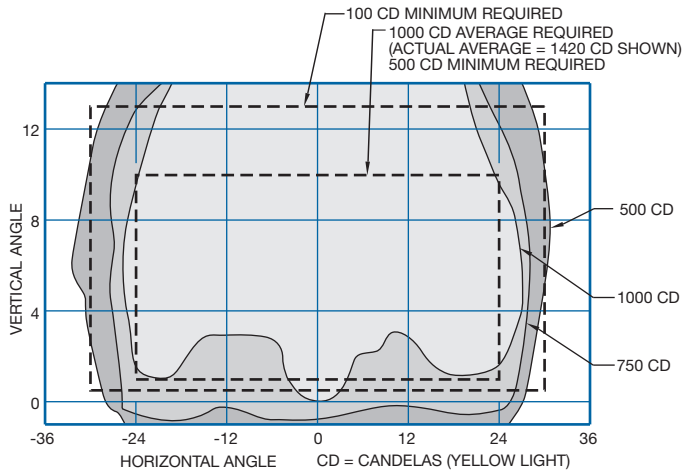
### Outline Drawing

Dimensions:	inches (mm)
Instruction Manual:	9927
Shipping Weight:	23.0 lbs. 10.4 kg
Shipping Volume:	0.7 cu. ft. 0.02 m <sup>3</sup>

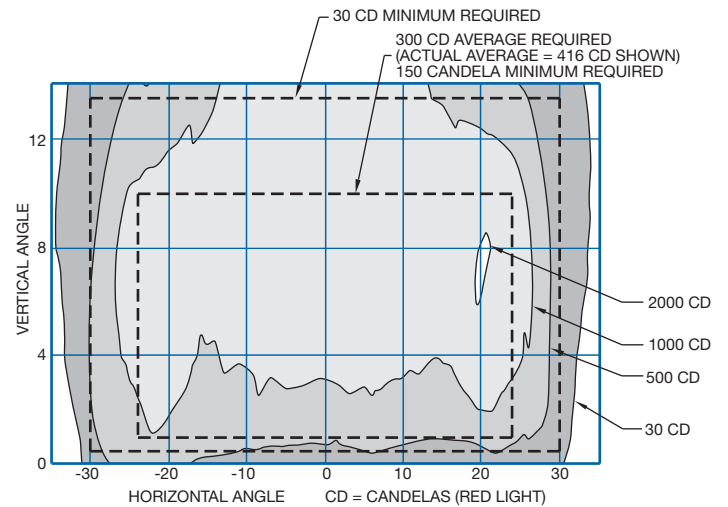
852S3 Shown



## Typical Photometric Data



L-852G Runway Guard Light



L-852S Stop Bar Light

## Accessories

Item Description	Catalog Number	Item Description	Catalog Number
Base L-868B, Class I, 24" Deep	AC24242Q200303	Isolation Transformer – 100 W, 20A/6.6 A	33005
Connector Kit – L-823, 8AWG, 0.32" to 0.43" O.D.	823KP-D4 -D4	Isolation Transformer – 100 W, 6.6/6.6 A	33004
Heat Shrink Kit – 1 piece	10047-2154	Lifting Tool (for outer ring)	19999
Heat Shrink Kit – 2 piece	10047-1425		

## Renewal Parts

Description	Part Number	Description	Part Number
Bracket – Clear Fresnel	21487	Fresnel gasket	21132
Bracket – Red Filter	21488	Gasket – Bottom Cover	21124*
Ductile Iron Mounting Ring	21508	Lamp – 105 W, 6.6 A	21128
External support ring gasket	21180	Lamp Bracket Assembly	21461
Feed-through Assembly – 1 Lamp, 1 Connector	21122	Lens Replacement Kit, L-852G	21126-C
Feed-through Assembly – 2 Lamp, 1 Connector	21121	Lens Replacement Kit, L-852S	21126-AR
Filter – Red	21490	O-Ring – Bottom Cover	10035-62*
Fresnel Filter – Clear	21491	Spare Optical Assembly	852X3-X-NSR
Fresnel Filter – Yellow	21130-TY		

\* For unit without o-ring groove in top aluminum forging see instruction manual.

### Note:

1. Lens Replacement Kit includes lens, lens boot, lens retaining gasket, gasket lubricant, and lens retaining bracket and screws.

