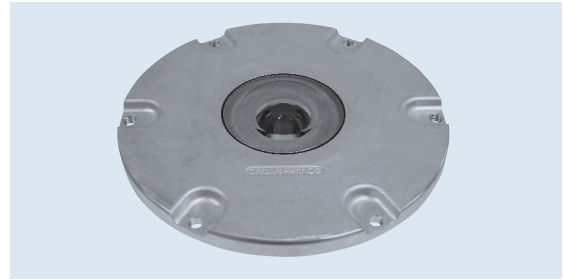


PRO III™ TOL

Omnidirectional Taxiway Light

Compliances:

- FAA AC 150/5345-46: L-852T & E
- ICAO Annex 14
- UFC 3-535-01



Applications

The TOL is an inset taxiway edge and taxiway intersection fixture. The TOL is intended for use on a 6.6A constant current circuit through an L-830 isolation transformer.

Features



- ETL Certified (12" only)
- Low profile, <.25" (6 mm) – FAA Style 3
- High-strength aluminum optical assembly
- Easy to maintain – no sealant required for prism or feed-through assembly replacement
- Pressure test plug for seal integrity verification
- It is recommended that caution be used during snowplow operations. Use of a rubber tipped blade is recommended. Fixture is not warranted against snowplow damage.

Ordering Information



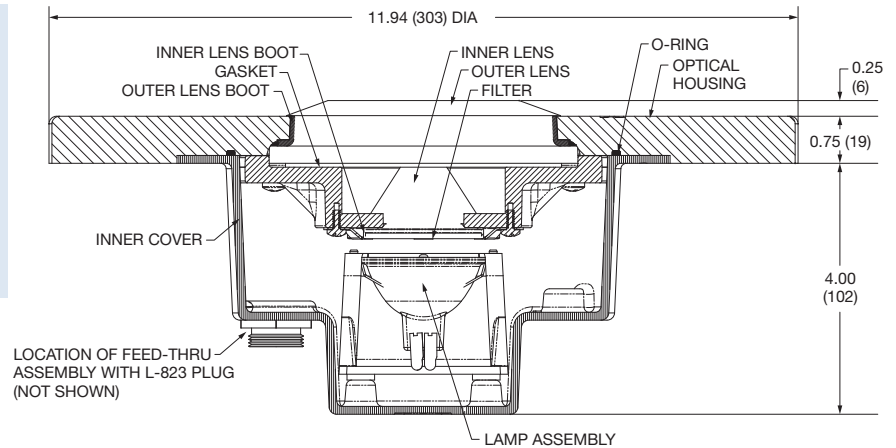
Fixture Type: _____

Color: _____
 T = Taxiway Edge (Omni-Directional Blue)
 E = Taxiway Intersection (Omni-Directional Yellow)

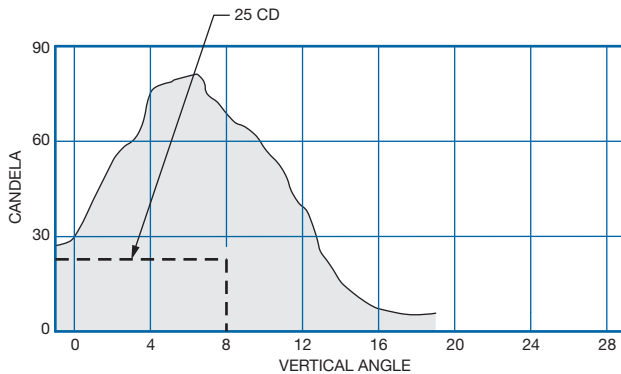
Fixture Diameter: _____
 008 = 8" Fixture with mounting bolt pattern per IEC specifications, 7.25" mounting BC
 12A = 12" Fixture with 11.25" mounting BC
 12B = 12" Fixture with 10.25" mounting BC

Outline Drawing

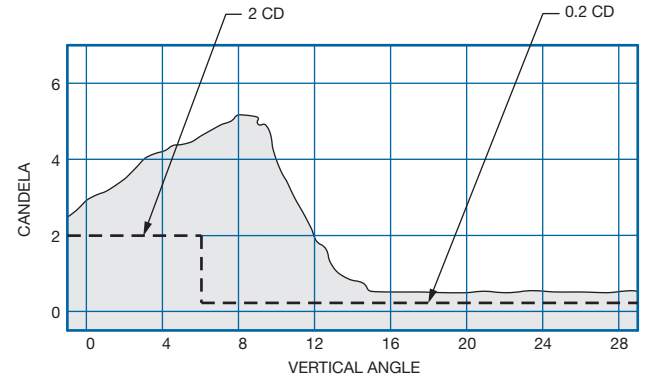
Dimensions:	inches (mm)
Instruction Manual:	2528
Shipping Weight:	10.5 lbs 4.8 kg
Shipping Volume:	0.7 cu ft 0.02 m ³



Typical Photometric Data



L-852E Taxiway Intersection Light



L-852T Taxiway Edge Light

Accessories

Item Description	Catalog Number	Item Description	Catalog Number
12" Diameter Shallow Base – Aluminum	21238-X	Connector Kit – L823, 8 AWG	823KP-D4-D4
8" Diameter Shallow Base – Aluminum	21431-X	Heat Shrink Kit – 1 Piece	10047-2154
Base: L867B, Class 1, 24" Deep	AC21242H200301	Heat Shrink Kit – 2 Piece	10047-1425
Base: L868B, Class 1, 24" Deep	AC24242H200303	Isolation Transformer – 30/45W, 6.6/6.6 A	33001

Renewal Parts

Description	Part Number	Description	Part Number
Absorption Filter – Aviation Blue	21285-B	Inner Lens Boot	21257
Absorption Filter – Aviation Yellow	21285-Y	Lamp – 48W, 6.6A	21116
Bottom Cover Assembly	21265	Lamp Replacement Kit	21335*
Feed Through Assembly – 1 Lamp, 1 Connector	21122	O-Ring - Bottom Cover	10035-62
Gasket, for use with Shallow Base 21431	21381	Outer Lens Replacement Kit	21332**
Inner Lens	21255		

* Includes 20356 Rubber Grommet, 19143-2 Spacer, 21116 Lamp, 21294 Locking Spring and 21263 Bracket.

** Includes 21258 Gasket, 21256 Lens Boot and 21254 Outer Lens.

